



जहाँ है हरियाली  
वहाँ है खुशहाली

## Green India Mission

a strategy for climate change mitigation

enhancement of forest cover

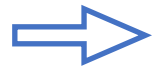
improvement of ecosystem services

livelihood opportunities for forest dependent communities

Second Meeting of State level Steering Committee:MP  
5 February 2020


# presentation framework

- Agenda Items for 2nd SLSC
- Background of GIM and perspective plan by state of MP
- convergence with Vision to Delivery Roadmap 2020-25
- Livelihood opportunities to forest dependent communities



# SLSC for GIM: 2nd Meeting 5<sup>th</sup> Feb 2020

## Agenda Points

1. Compliance of decision taken in first meeting dated 4<sup>th</sup> March 2016
2. Background of Green India Mission and Perspective plan of state of MP as approved by National Executive Council of MOEF CC
3. APOs of 2018-19 and 2019-20 approved by MOEF CC and progress of the state
4. Progress report of World Bank funded Ecosystem Service Improvement Project. (ESIP) 
5. Inclusion of Satpura PENCH corridor in the perspective plan of Green India Mission
6. Financial approval of projects approved by State Level Executive Committee

# Agenda 1: Compliance of decision taken in first meeting SLSC for GIM 4 march 2016

| Decisions taken   | Compliance status  |
|---|--|
| <ol style="list-style-type: none"><li>1. Revise the perspective plan prepared for MP in proportion to the geographical area of the state</li><li>2. Send the revised plan by 1April 2016 to the MOEF CC</li></ol> | <ol style="list-style-type: none"><li>1. Revised perspective plan (2016-2021) sent to MOEF CC with an outlay of 3157.36 crore rupees covering<ol style="list-style-type: none"><li>a) landscape area of 7,35,479 ha (3,40,700 ha forest area)</li><li>b) 122 mili-watrsheds and</li><li>c) 735 micro-watersheds</li><li>d) spread over 15 districts 18 forest divisions.</li></ol></li></ol> |

## Agenda 2: Approvals and release of fund by MOEF CC

1. In the fourth meeting of National Executive Council, MOEF\_CC dated 3 Jan 2018
  - a) Perspective plan of Rs 3157.33 cr for 2017-18 to 2022-23
  - b) APO 2017-18 for Rs 396. cr
2. Downsized APO of Rs 41.80 cr was approved by MOEF\_CC on 10 Sep 2018.
3. In its 5th meeting 17 Jul 2019, NEC approved APO FOR 2019-20 for Rs 78.86 crore.

## Agenda 2: Approvals and release of fund by MOEF CC

| duration                 | Plan as approved by NEC |               |               | Downsized APO being implemented |              |              |
|--------------------------|-------------------------|---------------|---------------|---------------------------------|--------------|--------------|
|                          | 2016-17<br>to 2021-22   | 2017-18       | 2018-19       | 2017-18                         | 2018-19      | 2019-20      |
| Outlay<br>(Rs in Cr.)    | <b>3,157.36</b>         | <b>396.75</b> | <b>748.51</b> | <b>0</b>                        | <b>41.80</b> | <b>78.86</b> |
| Landscape No<br>L1/L2/L3 | 8/122/735               | 8/122/735     | 8/122/735     | 0                               | 8/33/79      | 8/33/79      |
| Area(ha)                 | 3,40,700                | 1,17,645      | 2,41,000      | 0                               | 11,914       | 23,245       |
| Households(nos)          | 1,14,185                | 33,167        | 33,167        | 0                               | 3,317        | 2,750        |

## Agenda 2: Approvals and release of fund by MOEF CC

| Approval by NEC | Sanction date by MOEF_CC | Amount received by SFDA (Rs in Lakh) |             |                 | Amount Received date    | UC submitted (Rs. In lakh) | Remark   |
|-----------------|--------------------------|--------------------------------------|-------------|-----------------|-------------------------|----------------------------|--|
|                 |                          | Central share                        | State share | Total           |                         |                            |  |
| 3 Jan 2018      | 10 Sep 2018              | 1022.497                             | 681.664     | <b>1704.161</b> | 31 Oct. 2018            | <b>1626.04</b>             | 95.41% utilization (31-03-2019)                  |
|                 | 30 Mar 2019              | 1393.00                              | 0           | <b>1393.00</b>  | NA                      | NA                         | not be withdrawn. Finance approval not received. |
|                 | 07 June 2019             | 1532.35                              | 387.465     | <b>1920.00</b>  | 05 July to 16 Oct. 2019 | <b>1285.540</b>            | 66.95% utilisation (30-09- 2019)                 |
| 17 July 2019    | 13 Dec 2019              | 1874.94                              | 0           | <b>1874.94</b>  | 17 Jan. 2020            | <b>0</b>                   |  |

# Agenda 3: Progress of Green India Mission

| Target       |                    | Achievement  |       |                    |       |
|--------------|--------------------|--------------|-------|--------------------|-------|
| Phy<br>(ha.) | Fin.<br>(Rs. lakh) | Phy<br>(ha.) | %     | Fin.<br>(Rs. lakh) | %     |
| 11,915       | 4179.71            | 10,142       | 85.11 | 3463.69            | 82.86 |

## Highlights of Achievements

1. 33 L2 level (mili watersheds), 79 L3 level (micro watershed) in 18 forest division of 15 districts under treatment  
[https://mpforest.gov.in/HO\\_Outer/GIM\\_NationalMission.aspx](https://mpforest.gov.in/HO_Outer/GIM_NationalMission.aspx)
2. 3451 beneficiaries were trained for various livelihood activities of which 2903 have started earning
3. outstanding water harvesting structures in Satna, Betul, Hoshangabad, Sheopur, Panna
4. baseline spatial data captured to assess the progress of the project  
<https://geo.mpforest.gov.in/geoportal/apps/webappviewer/index.html?id=42fccb4bf21f47aebadac5cbd4746da8>
5. detailed MIS to capture comprehensive progress prepared  
<http://intranet.mpforest.gov.in/MPFD15/GIM/GIMHome.aspx>
6. Rigorous monitoring based on Result framework





## Agenda 3: Vision to Delivery Road Map 2020-25 : convergence with GIM contd.

| point | Vision to Delivery roadmap<br>point   | GIM perspective plan   |
|-------|---|--|
| 8.10  | Improve forest cover to achieve Nationally Determined Contributions (NDC) goal on climate change ,adaptation and ecosystem services | A mission to address climate change issues and NDC goal 5  |
| 8.9.3 | 3.5 lakh ha of area to be treated through “landscape approach”  | landscape based perspective plan or Rs. 3157.36 crore for treatment of 3,40,700 ha. approved by NEC of MOEF CC |

treatment of 2,71,190 ha. landscape identified as susceptible to climate change for Rs. 2512.00 crore for period 2021 to 2025 through CAMPA.

# Agenda 4: Progress of Ecosystem Services Improvement Project

- Global Environment Facility Trust Fund : Grant of US \$ 24.64 million
- A pilot project in the state of MP and CG to showcase the ESIP
- Results of the project to be up scaled across the country
- Project duration 16-08-2017 to 31-07-2022
- Project outlay for MP : 9 million US \$ : approx 49 crores
- To act as additionality over GIM project

## Progress (31 Dec 2019)

|                             |                 |
|-----------------------------|-----------------|
| Expenditure                 | Rs 1466.75 lakh |
| Reimbursement claim settled | Rs 970.28lakh   |

## Problems/Issues:

1. APO for 2019-20 for Rs. 2101.14 lakh, State budget Rs. 1270.70 lakh
2. Project implementation Agency still not approved (2.33 of MP financial code) for delegation of power.
3. NTFP based livelihood component worth Rs 10.00 crore is pending .



# Agenda 5: Inclusion of Satpura Pench corridor in GIM

| S.No                            | West         |                   | East         |                   | South        |                   | Grand Total<br>(Chhindwara) |                   |
|---------------------------------|--------------|-------------------|--------------|-------------------|--------------|-------------------|-----------------------------|-------------------|
|                                 | Phy<br>(ha.) | Fin (Rs.<br>lakh) | Phy<br>(ha.) | Fin (Rs.<br>lakh) | Phy<br>(ha.) | Fin (Rs.<br>lakh) | Phy<br>(ha.)                | Fin (Rs.<br>lakh) |
| Forest area                     | 4200         | 2994.46           | 1000         | 650.97            | 1700         | 1111.43           | <b>6900</b>                 | <b>4756.86</b>    |
| Non forest<br>area              | 750          | 710               | 20           | 4                 | 30           | 6                 | <b>800</b>                  | <b>720</b>        |
| Roadside<br>(km)                | 10           | 7.00              | 2            | 1.4               | 5            | 3.5               | <b>17</b>                   | <b>11.9</b>       |
| alternative fuel<br>energy (HH) | 1510         | 49.83             | 670          | 22.11             | 910          | 30.03             | <b>3090</b>                 | <b>101.97</b>     |
| Capacity<br>Building            | -            | 701.52            | -            | 126.27            | -            | 208.71            | -                           | <b>1036.5</b>     |
| <b>Grand Total</b>              | <b>4950</b>  | <b>4462.81</b>    | <b>1020</b>  | <b>804.75</b>     | <b>1730</b>  | <b>1359.67</b>    | <b>7700</b>                 | <b>6627.23</b>    |

## Agenda 6: Meetings of State Level Executive Committee

| SLEC meeting            | Date        |
|-------------------------|-------------|
| 1 <sup>st</sup> meeting | 26 Dec 2018 |
| 2 <sup>nd</sup> meeting | 6 Jan 2020  |



## **Agenda 6: Financial approval of projects approved in APO (2018-19) by State level Executive Committee**

**contd**

1. Approval to PPSU(State Planning Commission) proposal for socio-economic assessment of selected landscapes under GIM for Rs. 66.00 Lakh
2. Approval to IIFM, Bhopal proposal for Watershed hydrology survey under GIM landscapes for Rs. 20.00 lakh.

## Agenda 6: Financial approval of projects approved in APO (2019-20) by State level Executive Committee

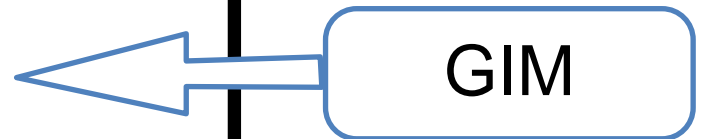
Contd.

1. Approval of IIFM, Bhopal Proposal on Ecosystem Services Valuation and Accounting of Madhya Pradesh Forest. Total Project Cost Proposed : Rs. 84.43 lakh
2. Proposal to include Satpura-Pench Corridor landscape of Chhindwara district under GIM with an outlay of Rs. 6627.23 lakh.
3. Approval of Shivpuri Forest Division research proposal “Status of forest biodiversity and livelihood opportunity”, for 01.10 lakh.
4. Under GIM, M.P. State MFPP to prepare proposal on NTFP & Livelihood based Framework for forest dependent communities of GIM landscape in the state
5. M.P. State Biodiversity Board Proposal on upscaling biodiversity monitoring and capacity building activities across 18 divisions covered under GIM. (Rs. 34.50 Lakh for year 2019-20. Total project : Rs. 255.30 Lakh)

Thanks

# National Action Plan for Climate Change

- 1) National Solar Mission,
- 2) National mission on enhanced energy efficiency,
- 3) National Mission on Sustainable habitat,
- 4) National Water Mission,
- 5) National Mission on Himalayan Ecosystem,
- 6) National Mission on Green India,**
- 7) National Mission on Sustainable Agriculture, and
- 8) National Mission on Strategic Knowledge for Climate Change.





# National Mission for a Green India

"National Action Plan on Climate Change" to provide safeguard against the threats of climate change on

- natural biological resources
- livelihoods of forest dependent communities

Objectives: to increase/improve

- i. forest/tree cover by 5 million ha
- ii. quality of forest cover of 5 million ha
- iii. ecosystem services (biodiversity, hydrological services, c-sequestration over 10 million ha)
- iv. forest based livelihood income of 30 lakh forest dependent households
- v. Enhanced annual CO<sub>2</sub> sequestration of 50-60 million tons by the year 2020

# Nationally Determined Contributions

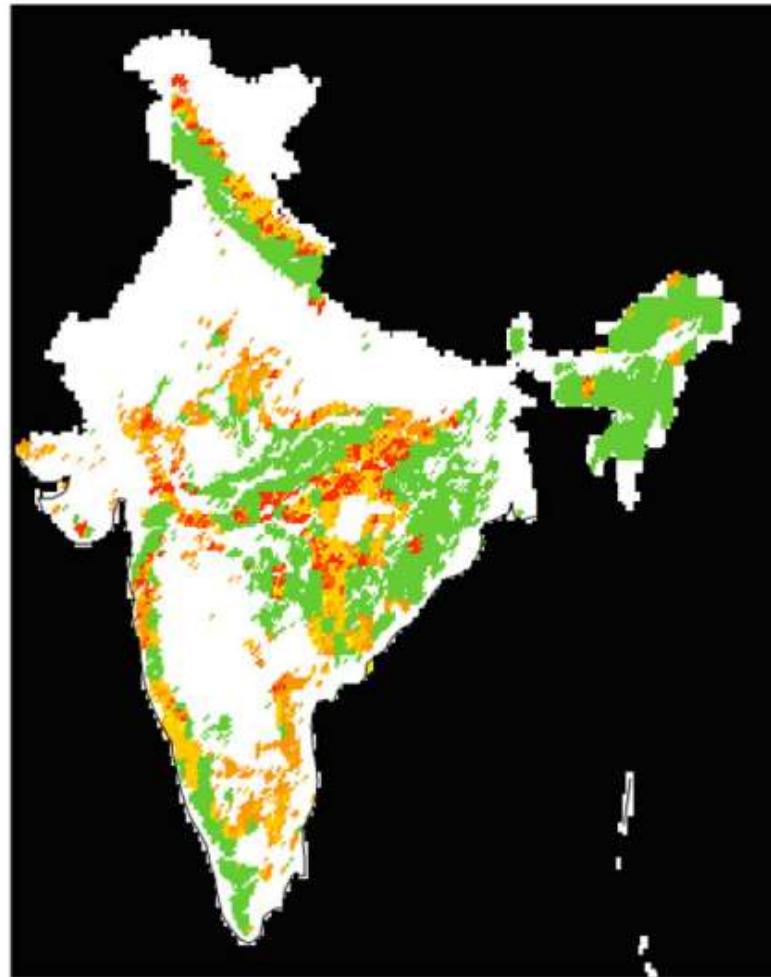
In 2015, India submitted its Nationally Determined Contributions (NDCs) to the United Nations Framework Convention on Climate Change (UNFCCC) for post-2020 climate actions under the Paris Agreement of the UNFCCC.

## **The Goal 5 of the NDC**

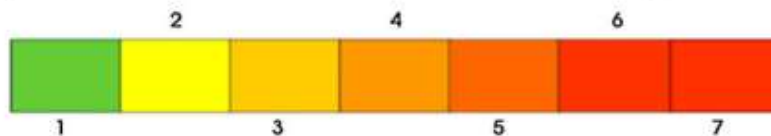
*“to create an additional carbon sink of 2.5-3 billion tonnes of CO<sub>2</sub> equivalent by 2030”.*

# Distribution of forest vulnerability index

(Impact of climate change on Indian forests: a dynamic vegetation modelling approach by IISc.)



|                  |   |
|------------------|---|
| Least vulnerable | 1 |
| Most vulnerable  | 7 |



**Table 3** Number of forested grid points projected to undergo change in different states

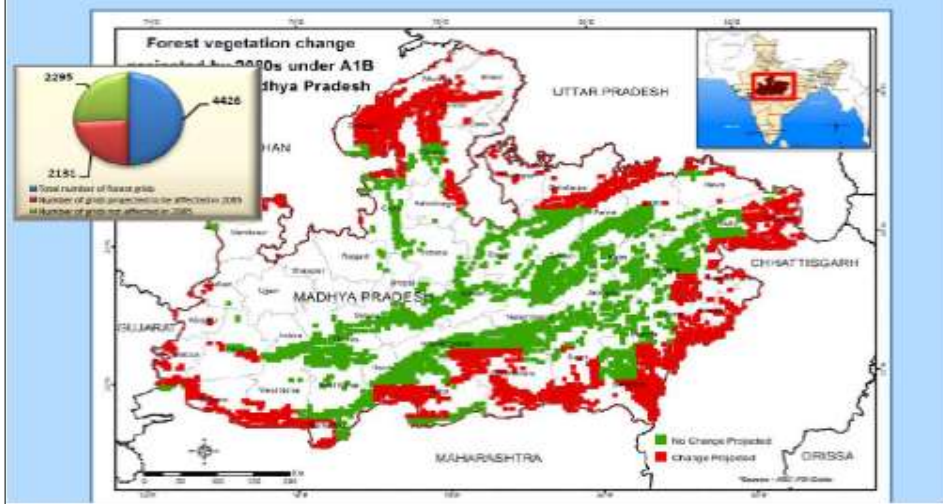
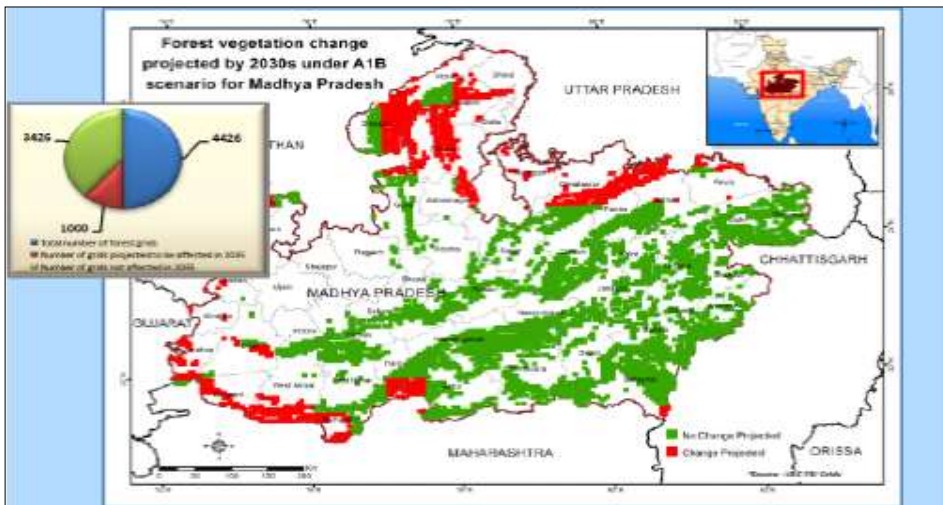
| State name        | Num. forest grids | Num. forest grids changed (A2) | % forest grids changed (A2) | Num. forest grids changed (B2) | % forest grids changed (B2) |
|-------------------|-------------------|--------------------------------|-----------------------------|--------------------------------|-----------------------------|
| Madhya Pradesh    | 4437              | 2183                           | 49.20                       | 1807                           | 40.73                       |
| Arunachal Pradesh | 3410              | 93                             | 2.73                        | 93                             | 2.73                        |
| Chhattisgarh      | 3130              | 2292                           | 73.23                       | 2292                           | 73.23                       |
| Andhra Pradesh    | 2588              | 1615                           | 62.40                       | 1191                           | 46.02                       |
| Maharashtra       | 2338              | 1060                           | 45.34                       | 827                            | 35.37                       |
| Orissa            | 2333              | 295                            | 12.64                       | 206                            | 8.83                        |
| Karnataka         | 2004              | 1344                           | 67.07                       | 904                            | 45.11                       |
| Jammu and Kashmir | 1535              | 189                            | 12.31                       | 518                            | 33.75                       |
| Assam             | 1247              | 12                             | 0.96                        | 12                             | 0.96                        |
| Uttarakhand       | 1149              | 283                            | 24.63                       | 256                            | 22.28                       |
| Others            | 10404             | 2573                           | 24.73                       | 2367                           | 22.75                       |

|             |   |
|-------------|---|
| A2 scenario | Atmospheric CO2 concentration reaches 740 ppm by 2085 |
| B2 Scenario | Atmospheric CO2 concentration reaches 575 ppm by 2085 |

# Approach of Identification of landscapes

1. Identification of L1 landscape : agro-climatic zone
2. Selection of L2 landscapes : Vulnerability to Climate Change
  - a) Impact of climate change on forests of Madhya Pradesh:- a dynamic vegetation modelling approach” : by IISC, Bangalore.
  - b) Vulnerability profile for the districts of Madhya Pradesh as determined by EPCO Bhopal

# Forest Vegetation change projected for 2030s and 2080s for Madhya Pradesh.

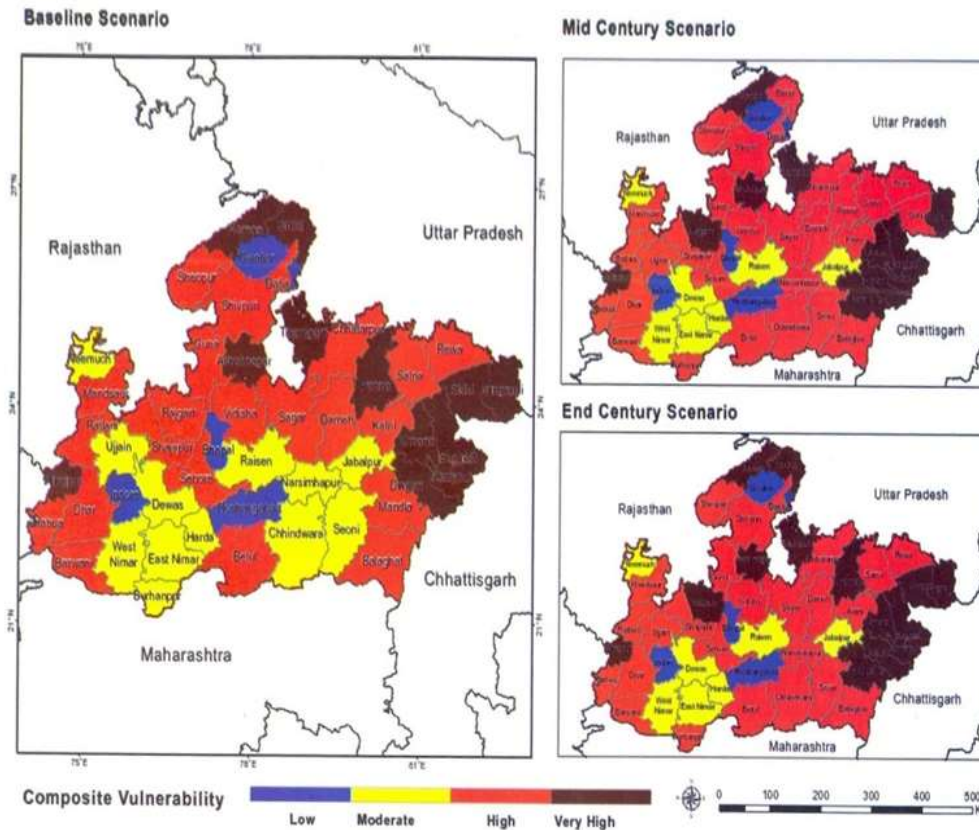


| Vulnerability of MP forest grids out of 4426 A1B scenario | By 2030 | By 2080 |
|---|---------|---------|
| Number of vulnerable grids                                | 1000    | 2131    |
| % of vulnerable grids                                     | 23%     | 48%     |



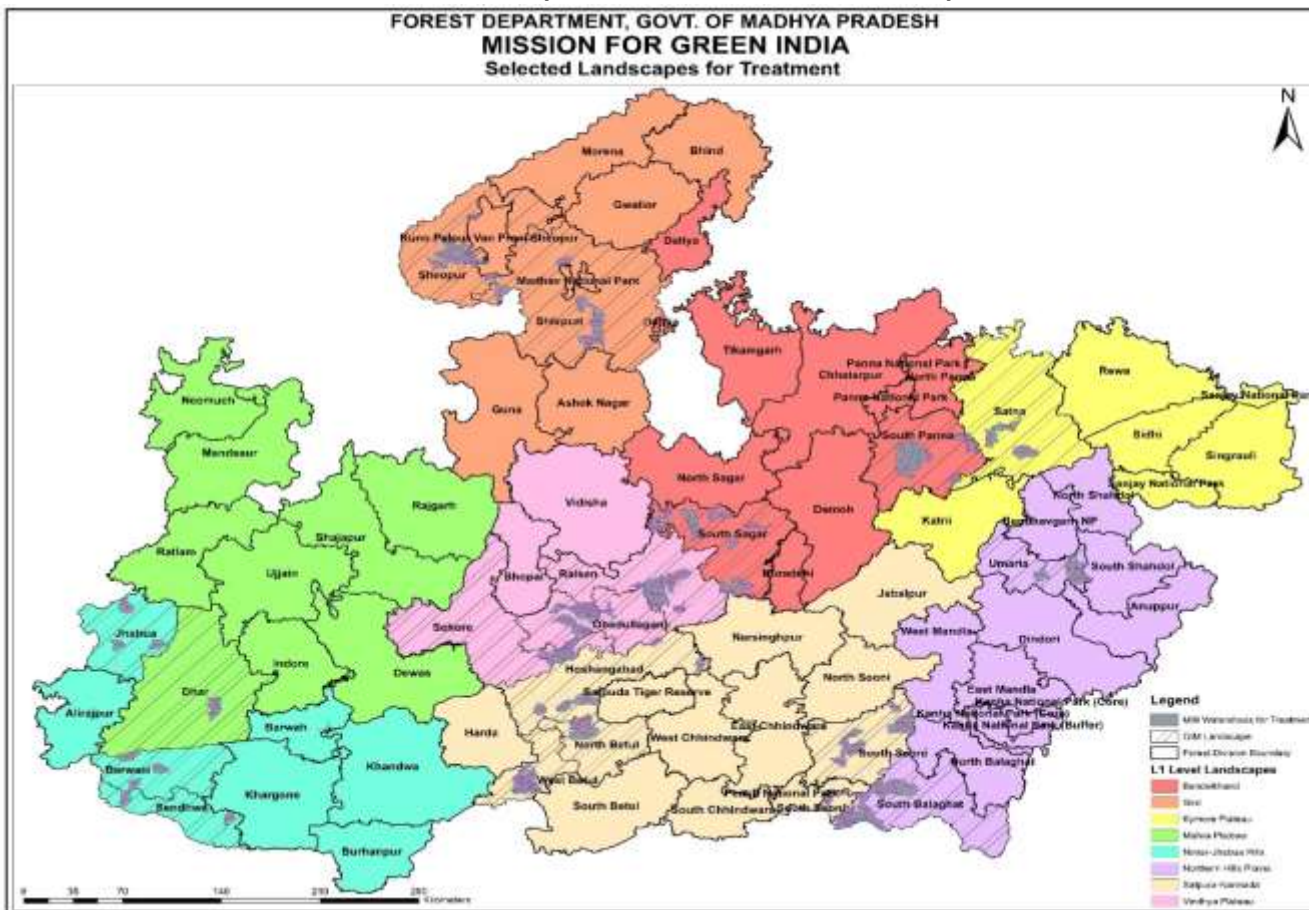
Reference: A study “Impact of climate change on Indian Forests: a dynamic vegetation modelling approach” IISc, Bangalore

# Composite Vulnerability map showing low, moderate, high and very high cluster of districts in M.P.



Reference: A study “Madhya Pradesh State Climate Change Vulnerability Assessment” EPCO, Bhopal

# Landscape for GIM Madhya Pradesh



1. L1 landscapes : 8 (based on 11 agro-climatic zones)
2. L2 landscapes : 122 milli-w/s (**18 forest divisions, 15 districts**)
3. L3 landscapes : 735 micro-w/s
4. Treatment area
  - a) Landscape area: 7,35,480 ha
  - b) Forest area: 3,40,000 ha



# Vulnerability of Landscapes

(as per EPCO and IISC)



| Forest Division | Landscape (Vulnerability Class)   |
|-----------------|---|
| Satna           | Vulnerability to forest change for short and long scenario( as per IISC) and showing high composite vulnerability (as per EPCO) |
| South Balaghat  |   |
| West Betul      |   |
| Dhar            |   |
| Jhabua          |   |
| Badwani         |   |
| Sendhwa         |   |
| South Panna     |   |
| Sheopure        |   |
| Shivpuri        |   |
| Umaria          | Showing Very High Composite Vulnerability (as per EPCO)   |

**Cont.**

| <b>Forest Division</b> | <b>Landscape (Vulnerability Class)</b>  |
|------------------------|---|
| Hoshangabad            | Vulnerability to forest change for long scenario( as per IISC) and showing low composite vulnerability scenarios of baseline, mid-century and end century (as per EPCO)                             |
| South Seoni            | Vulnerability to forest change for long term scenario (as per IISC) and showing High composite vulnerability scenarios of mid-century, end century and moderate in baseline (as per EPCO)           |
| North Betul            | Vulnerability to forest change for short and long term scenario (as per IISC) and showing High composite vulnerability scenarios of mid-century, end century and moderate in baseline (as per EPCO) |
| Raisen                 | showing moderate composite vulnerability scenarios of mid-century, end century and baseline (as per EPCO)   |
| Sehore                 | showing high composite vulnerability scenarios of mid-century, end century and baseline (as per EPCO)   |
| South Sagar            |   |
| Obaidullaganj          | showing moderate composite vulnerability scenarios of mid-century, end century and baseline (as per EPCO)   |

## Landscapes for GIM MP

| L1 Landscape     | Name                  | L2 Divisions | No. of Milli watersheds as L2 Landscape | No. of micro watersheds as L3 Landscape | Area (Ha)         |
|------------------|-----------------------|--------------|---|---|-------------------|
| Landscape (i)    | Kymore plateau        | Satna        | 4                                       | 28                                      | 33,343.09         |
| Landscape (ii)   | Northern Hills Plains | Umaria       | 4                                       | 24                                      | 31,919.78         |
|                  |                       | S. Balaghat  | 12                                      | 71                                      | 74,703.37         |
| Landscape (iii)  | Satpura-Narmada       | Hoshangabad  | 5                                       | 30                                      | 33,355.73         |
|                  |                       | South Seoni  | 11                                      | 67                                      | 75,028.40         |
|                  |                       | North Betul  | 4                                       | 20                                      | 27,860.36         |
|                  |                       | W. Betul     | 8                                       | 24                                      | 29,083.20         |
| Landscape (iv)   | Vindhya Plateau       | Raisen       | 10                                      | 67                                      | 51,000.26         |
|                  |                       | Obedullaganj | 10                                      | 57                                      | 51,350.07         |
|                  |                       | Sehore       | 5                                       | 28                                      | 27,224.82         |
| Landscape (v)    | Malwa Plateau         | Dhar         | 3                                       | 18                                      | 10,794.95         |
| Landscape (vi)   | Nimar- Jhabua Hills   | Jhabua       | 3                                       | 20                                      | 20,596.94         |
|                  |                       | Badwani      | 3                                       | 21                                      | 18,218.11         |
|                  |                       | Sendhwa      | 2                                       | 11                                      | 11,708.77         |
| Landscape (vii)  | Bundelkhand           | South Sagar  | 13                                      | 79                                      | 71,378.77         |
|                  |                       | S. Panna     | 9                                       | 64                                      | 68,068.78         |
| Landscape (viii) | Gird                  | Sheopur      | 8                                       | 48                                      | 50,343.13         |
|                  |                       | Shivpuri     | 8                                       | 58                                      | 49,501.00         |
| <b>Total</b>     |                       |              | <b>122</b>                              | <b>735</b>                              | <b>735,479.53</b> |

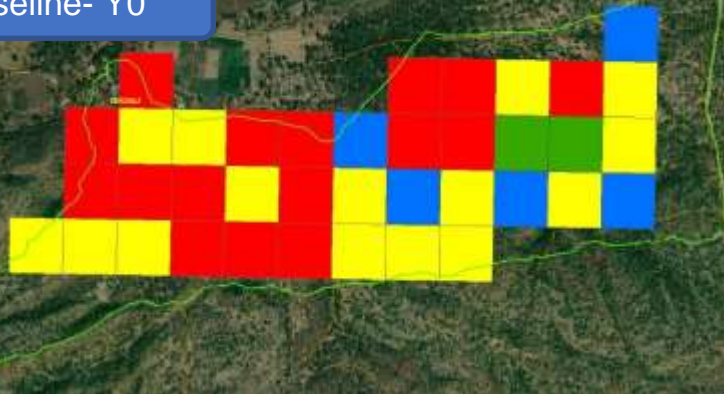
# GIM Results Framework

| Expected Results  | Indicator  | Data Source/Method                                      | Progress  |
|---|--|---|---|
| 1. Forest/tree cover on forest/non-forest lands is enhanced   | -% area with forest cover<br><br>-% area in various forest density classes   | Forest survey<br><br>Remote sensing and ground truthing | <b>96 KML files out of 116</b> plantation sites covering an area of 7509.43 ha. uploaded in Plantation Monitoring portal. |
| 2. Quality of forest cover & ecosystem services of forest/non-forests improved in<br>a. Moderately dense forest,<br>b. Open forest<br>c. Degraded grasslands<br>d. wetlands | a.1. % of forest area naturally regenerating<br><br>a.2 Shannon Weiner Index | Data from permanent plots                               | <b>a.1. survey for 116 sites.</b> Grid points for each site geo-tagged and regeneration survey as per MPFD guidelines     |

# Hoshangabad Division Regeneration Survey Detail

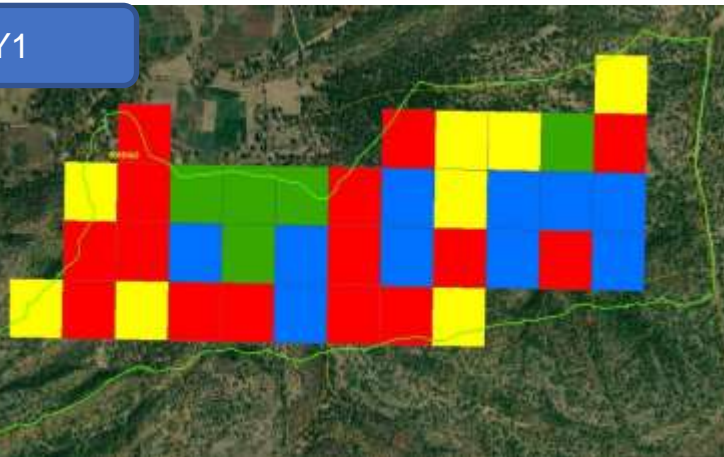


Baseline- Y0



Division Name- Hoshangabad  
 Range- Itarsi  
 Compartment No- RF 165 and 166  
 Y0= Baseline Year (2018)  
 Y1= Year 1 (Y0)

Y1



| Compartment No/Site | Total No of Grids | Y0         |            |          |           |
|---------------------|-------------------|------------|------------|----------|-----------|
|                     |                   | Negligible | Inadequate | Adequate | Profuse   |
| RF 165              | 21                | 5          | 9          | 2        | 5         |
| RF 166              | 17                | 11         | 6          | 0        | 0         |
| <b>Total</b>        | <b>38</b>         | <b>16</b>  | <b>15</b>  | <b>2</b> | <b>5</b>  |
|                     |                   | Y1         |            |          |           |
|                     |                   | Negligible | Inadequate | Adequate | Profuse   |
|                     |                   | 8          | 5          | 1        | 7         |
|                     |                   | 7          | 3          | 4        | 3         |
| <b>Total</b>        | <b>38</b>         | <b>15</b>  | <b>8</b>   | <b>5</b> | <b>10</b> |
| <b>Change</b>       |                   | <b>-1</b>  | <b>-7</b>  | <b>3</b> | <b>5</b>  |

- Above 2501-Profuse
- 1501 to 2500-Adequate
- 501 to 1500-Inadequate
- Less then 500-Negligible

# Hoshangabad Division Regeneration Survey Detail

Division Name- Hoshangabad  
Range- Itarsi & Banapura  
Compartment No- RF 156 & RF 4&5  
Y0= Baseline Year (2018)  
Y1= Year 1 (Y0)

- Above 2501-Profuse
- 1501 to 2500-Adequate
- 501 to 1500-Inadequate
- Less then 500-Negligible

Baseline- Y0

RF 156

Baseline- Y0

RF 4&5

Y1

RF 156

Y1

RF 4&5

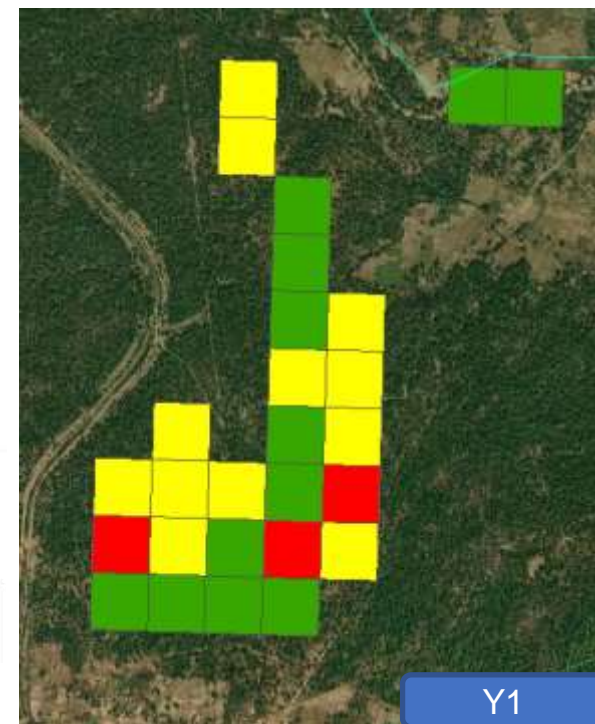
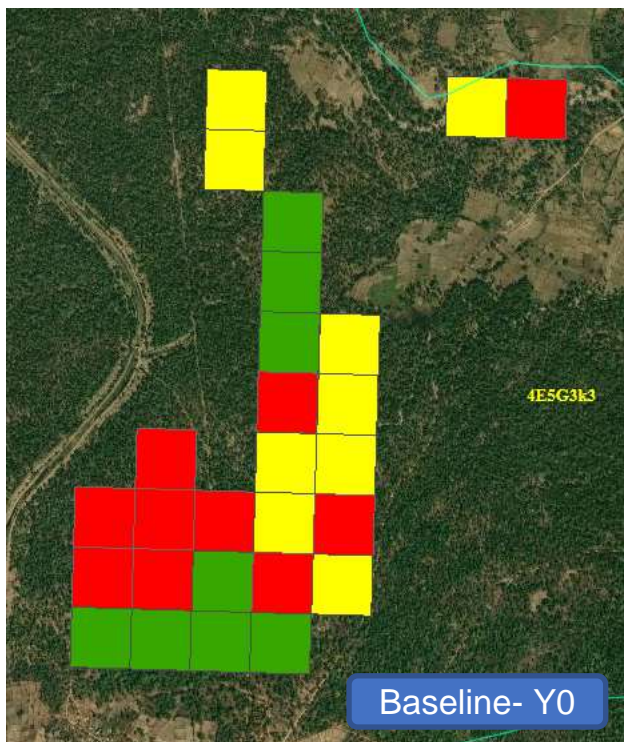
| Total No of Grids | Y0         |            |          |         |
|-------------------|------------|------------|----------|---------|
|                   | Negligible | Inadequate | Adequate | Profuse |
| 53                | 35         | 7          | 8        | 3       |
| Change            | Y1         |            |          |         |
|                   | Negligible | Inadequate | Adequate | Profuse |
|                   | 33         | 12         | 6        | 2       |
|                   | -2         | 5          | -2       | -1      |

| Total No of Grids | Y0         |            |          |         |
|-------------------|------------|------------|----------|---------|
|                   | Negligible | Inadequate | Adequate | Profuse |
| 70                | 35         | 21         | 10       | 4       |
| Change            | Y1         |            |          |         |
|                   | Negligible | Inadequate | Adequate | Profuse |
|                   | 19         | 35         | 8        | 8       |
|                   | -16        | 14         | -2       | 4       |

# South Balaghat Regeneration Survey Detail

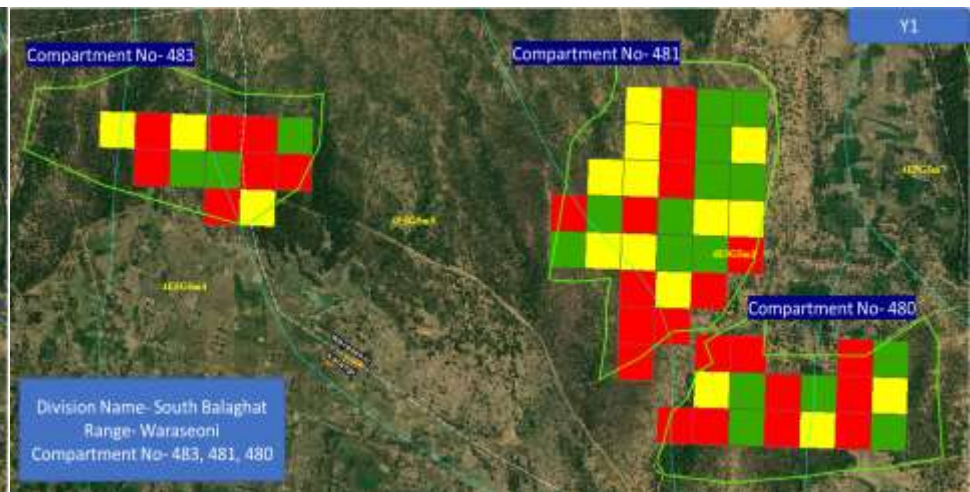
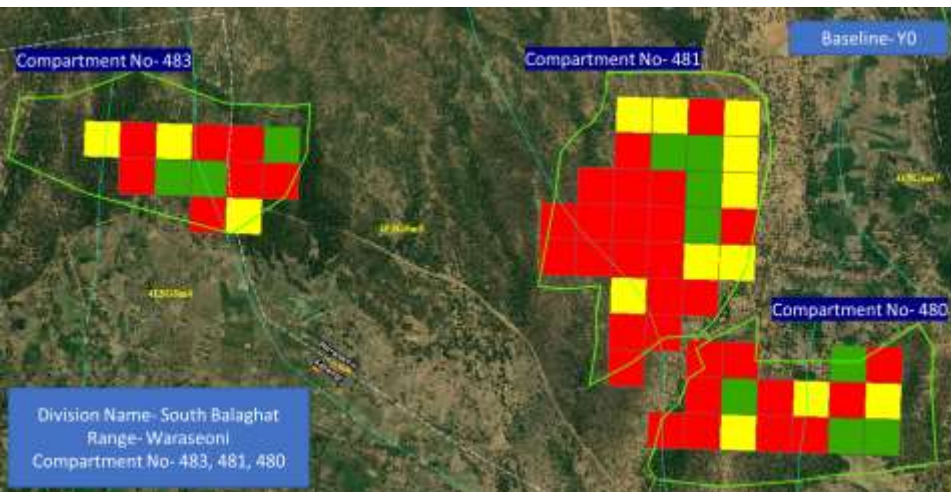
Division Name- South Balaghat  
 Range- Katangi  
 Compartment No- 567, 794, 570  
 Y0= Baseline Year (2018)  
 Y1= Year 1 (Y0)

- Above 2501-Profuse
- 1501 to 2500-Adequate
- 501 to 1500-Inadequate
- Less then 500-Negligible



| Compartment No/Site | Total No of Grids | Y0         |            |          |          |
|---------------------|-------------------|------------|------------|----------|----------|
|                     |                   | Negligible | Inadequate | Adequate | Profuse  |
| RF 567, 794, 570    | 27                | 10         | 9          | 8        | 0        |
|                     |                   | Y1         |            |          |          |
|                     |                   | Negligible | Inadequate | Adequate | Profuse  |
|                     |                   | 3          | 12         | 12       | 0        |
| <b>Change</b>       |                   | <b>-7</b>  | <b>3</b>   | <b>4</b> | <b>0</b> |

# South Balaghat Regeneration Survey Detail

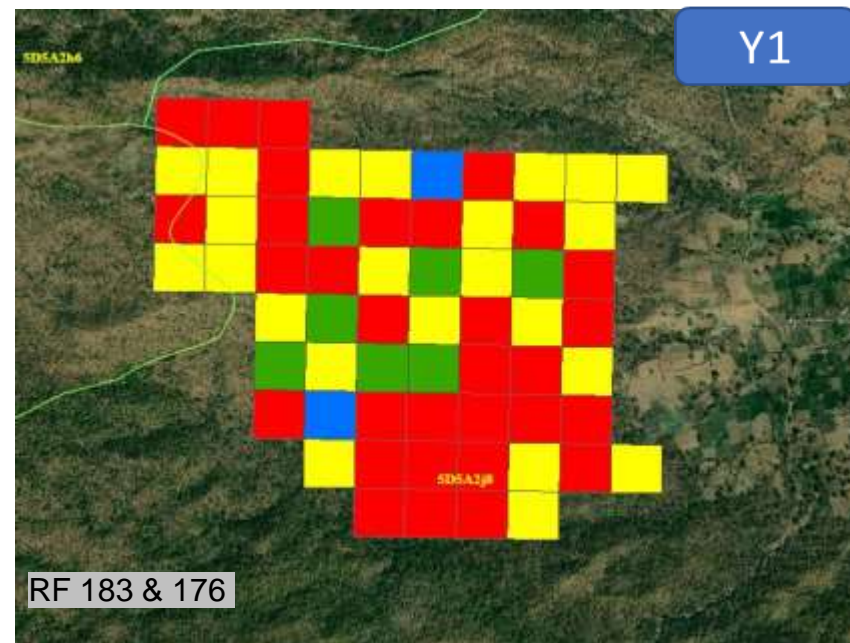
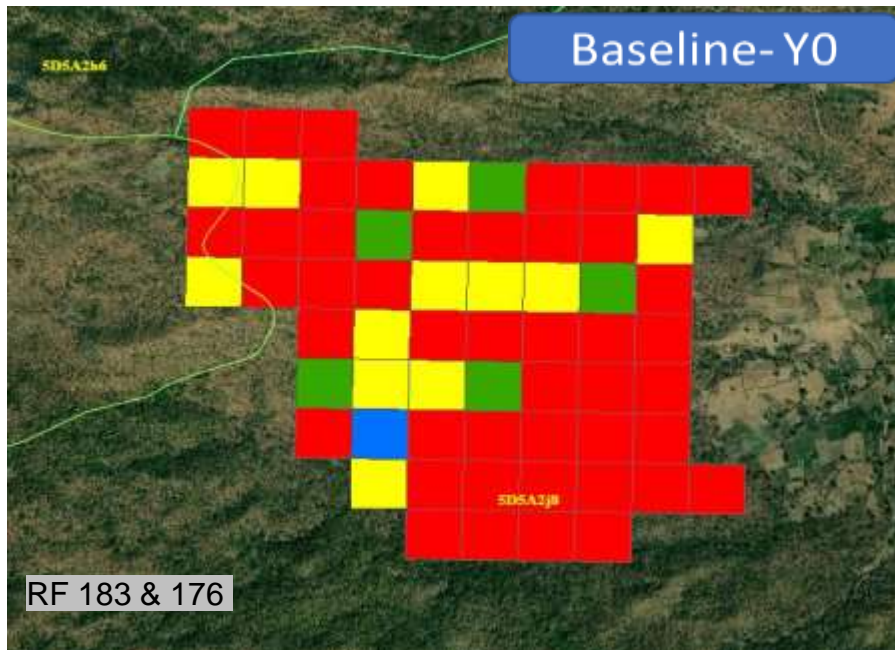


| Compartment No/Site | Total No of Grids | Y0         |            |           |          |
|---------------------|-------------------|------------|------------|-----------|----------|
|                     |                   | Negligible | Inadequate | Adequate  | Profuse  |
| RF 483              | 13                | 7          | 3          | 3         | 0        |
| RF 480              | 17                | 10         | 3          | 4         | 0        |
| RF 481              | 31                | 19         | 8          | 4         | 0        |
| <b>Total</b>        | <b>61</b>         | <b>36</b>  | <b>14</b>  | <b>11</b> | <b>0</b> |
|                     |                   | Y1         |            |           |          |
|                     |                   | Negligible | Inadequate | Adequate  | Profuse  |
|                     |                   | 2          | 0          | 11        | 0        |
|                     |                   | 9          | 3          | 5         | 0        |
|                     |                   | 11         | 10         | 10        | 0        |
| <b>Total</b>        | <b>61</b>         | <b>22</b>  | <b>13</b>  | <b>26</b> | <b>0</b> |
| <b>Change</b>       |                   | <b>-14</b> | <b>-1</b>  | <b>15</b> | <b>0</b> |

- Above 2501-Profuse
- 1501 to 2500-Adequate
- 501 to 1500-Inadequate
- Less then 500-Negligible



# North Betul Regeneration Survey Detail



Division Name- North Betul  
Range- Shapur  
Compartment No- RF 183 & 176  
Y0= Baseline Year (2018)  
Y1= Year 1 (Y0)

| Total No of Grids | Y0         |            |          |         |
|-------------------|------------|------------|----------|---------|
|                   | Negligible | Inadequate | Adequate | Profuse |
| 63                | 45         | 12         | 5        | 1       |
| Change            | Y1         |            |          |         |
|                   | Negligible | Inadequate | Adequate | Profuse |
|                   | 31         | 23         | 7        | 2       |
|                   | -14        | 11         | 2        | 1       |

**GIM Implementation Guidelines-Results Framework  
based progress in the state (as on 30 September 2019)**



| Expected Results | Indicator                | Data Source/Method        | Progress  |
|------------------|--------------------------|---------------------------|---|
|                  | a.3 Carbon sequestered   | Data from permanent plots | <b>a.3.-Carbon measurement</b> training by FSI & ICFRE to 18 GIM divisions. More than 100 field officers/staff trained. |
|                  | a.4 Above ground biomass | Data from permanent plots |   |



**GIM Implementation Guidelines-Results Framework  
based progress in the state**



| Expected Results  | Indicator   | Data Source/Method                                 | Progress  |
|---|---|--|---|
| 4. Public forest/ non-forests areas (taken up under the Mission) managed by community institutions.                     | § % of area under the management of community institutions                                      | Village survey/survey of the forest area (PRA/RRA) | landscape planning for social, economic, natural resource-based issues for community participation in planning and ownership. |
| 5. Improved fuelwood-use efficiency and alternative energy devices by adopted by households in the Mission Target Area. | § % of HH reporting use of alternative energy devices<br>§ % of HH using fuel efficient devices | Sample HH Survey                                   | As per SECC 2011 profile list of beneficiaries as per SECC 2011 data  |

**GIM Implementation Guidelines-Results Framework  
based progress in the state (as on 30 September 2019)**



| Expected Results  | Indicator   | Data Source/Method                          | Progress   |
|---|---|---|--|
| 6. Forest/non forest-based livelihoods income for 3 million forest dependent households enhanced in the MTA       | § No. of targeted households reporting at least 25% increase in real income   | Sample HH Survey target area and estimation | 3451 families given skill training for diversified and forest based livelihood activities. |
| 7. Forest/non forest-based livelihoods of about 3 million households living in and around forests are diversified | § % of HH reporting diversification of income sources<br>§ % of HH reporting increase in number of days of employment in primary occupation | Sample HH Survey                            |  |





## GIM Forestry/ Plantation Works

### Site Preparation



### Plantation



### Planting Works





# Local Initiatives

## Pond construction- Berme village, Parsamania Plateau, Maihar Satna division

- Village Berme, Uchehra Range, all 8 handpumps gone dry
- has struck nothing short of Gold by tapping an underground stream.
- Pond constructed to provide water to parched village post monsoon
- Villagers thronged in summer month for drinking water.



# Plantation in farmer's land





# Exposure visits of staff & community

## Visit to Rale Gan Siddhi village- Hoshangabad Division



## Livelihood Activities

1. 3451 beneficiaries were trained for various livelihood activities of which 2903 have started earning
2. 98 SHGs constituted in hoshangabad division for mushroom cultivation
3. 12 female beneficiaries trained and a sanitary napkin unit established in Bhoura of North Betul division.
4. 182 tribal beneficiaries trained for honey collection in south panna, Hoshangabad & Sheopur division.
5. 294 vermicompost units constructed in Hoshangabad, South Balaghat, North Betul & Satna division.
6. 9 biogas digester units constructed in south sagar division
7. 35 female beneficiaries of satna division trained for agarbati making, they are producing 6 to 7 quintal per day.
8. 730 female beneficiaries trained for stitching & tailoring in S. Balaghat, Jhabua, S. Panna, Umaria, Dhar, Hoshangabad, N. Betul, Raisen, Sehore, S. Sagar, S. Seoni.
9. 293 youth trained for computer, driving, electric prepare in Badwani, Hoshangabad, Sendhwa, N. Betul, W. Betul.

# Livelihood based Skill Dev. & Training



| S.No | Type of training            | Rs. In Lakh       | No.'s trained | No.'s employed |
|------|-----------------------------|-------------------|---------------|----------------|
| 1    | Tailoring                   | 1,771,752         | 1018          | 1018           |
| 2    | Vermi compost               | 4,031,357         | 410           | 410            |
| 3    | Bee Keeping & processing    | 1,079,400         | 248           | 248            |
| 4    | Computer                    | 402,600           | 151           | 135            |
| 5    | Incense & Incense stick     | 1,322,281         | 65            | 65             |
| 6    | Sanitary napkin             | 274,843           | 12            | 12             |
| 7    | Leaf plate making           | 468,700           | 68            | 62             |
| 8    | Mushroom production         | 75,000            | 108           | 108            |
| 9    | Poultry                     | 9,000             | 117           | 57             |
| 10   | Herbal color                | 72,281            | 30            | 30             |
| 11   | Lac production & handicraft | 200,000           | 20            | 20             |
| 12   | Motor vehicle driver        | 132,000           | 15            | 15             |
| 13   | Security guard              | 1,765,000         | 208           | 188            |
| 14   | Electrician                 | -                 | 80            | 80             |
| 15   | Skill/livelihood            | 484,155           | 501           | 55             |
| 16   | Bamboo handicraft           | 700,000           | 60            | 60             |
| 17   | Fish farming                | 16,500            | 201           | 201            |
| 18   | Mahua collection            | 1,000,740         | 139           | 139            |
|      | <b>Total</b>                | <b>13,805,609</b> | <b>3451</b>   | <b>2903</b>    |



# GIM livelihoods promotion initiatives



# Livelihood promotion

Fish farming-  
Satna/N.Betul



Mahua collection-  
Hoshangabad



# Local Initiatives

## Skill development training- Raisen division

- ❖ Tailoring training to 106 women from Panjhirpa, Bhavargarh, Suagarh and Kitora villages.
- ❖ NGO; Padmavati Welfare Foundation, Sagar
- ❖ Cost: Rs.1,20,000.00



## Skill development training - Sendhwa division

- ❖ 90 unemployed youth trained- security guard, electrician, computer operator etc.
- Training by: RESIT
- Cost – Rs. 3,00,000/-



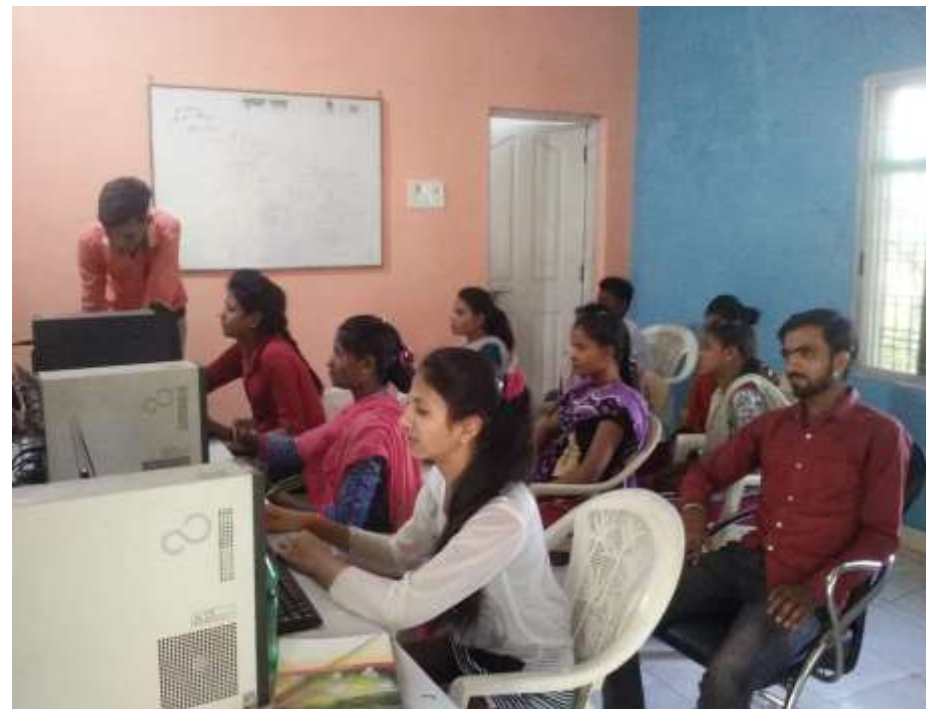
# Local Initiatives

## Skill development training- South Seoni division

- ❖ computer training- 40 unemployed youth
- ❖ Participants-12<sup>th</sup> pass or graduates.
- ❖ By: RESIT (Rural Self Employment Training)

## Skill development training - South Balaghat division

- ❖ 30 days training program by RESIT (Rural Self Employment Training) Balaghat.
- ❖ 30 females trained from Chirchira, Mohantola and Tekaditola
- Cost – Rs. 3,19,00/-



# Local Initiatives

## Women of South Panna take a different route for strengthening livelihood

- Convergence with NRLM, Panna-women of GIM areas trained on soap making.
- Cost – Rs. 35,000/-
- Trained by – NRLM, Panna





# GIM awareness promotion- local media



## सीसीएफ ने तालाबों का किया निरीक्षण, जताया संतोष

कृषि विभाग के सीसीएफ के जिला अधिकारी श्री ए.के. शर्मा ने जिला क्षेत्र में तालाबों का निरीक्षण किया। श्री शर्मा ने तालाबों की स्थिति का निरीक्षण किया और जताया संतोष कि तालाबों की स्थिति अच्छी है।

श्री शर्मा ने तालाबों की स्थिति का निरीक्षण किया और जताया संतोष कि तालाबों की स्थिति अच्छी है।



## बना रहे थे तालाब, बनानी पड़ी बावली

कुछ गांवों में खोंदने पर जलभरा फूट पड़ी। भीषण गर्मी में जल संकट से जूझ रहे आदिवासियों की खोज का ठिकाना न रहा। ग्रामीणों ने मांग रखी कि इसे इस तरह से बंधवा दिया जाए कि बरसात में भी सुरक्षित रहे। वन संरक्षक राजीव मिश्र ने इसे तालाब के बीच बावली कट आकार देकर इस तरह से बनवा दिया कि हमेशा के लिए हो गया। इस बावली में मौजूदा समय में 7 से 8 फिट तक पानी भरा हुआ है।

## ग्रीन इण्डिया मिशन के अंतर्गत मुख्य वन संरक्षक भोपाल एवं टीवा की टीम ने वन परिक्षेत्र उचेहरा में बीटो का निरीक्षण किया

वन संरक्षक भोपाल एवं टीवा की टीम ने वन परिक्षेत्र उचेहरा में बीटो का निरीक्षण किया। टीम ने वन परिक्षेत्र की स्थिति का निरीक्षण किया और जताया संतोष कि वन परिक्षेत्र की स्थिति अच्छी है।



## ग्रामीणों से बीटो का निरीक्षण

ग्रामीणों से बीटो का निरीक्षण किया गया। ग्रामीणों ने बताया कि बीटो की स्थिति अच्छी है।

## तालाब सुधार के दौरान घट-घरी की जांचकाट जल संकट से जूझता बेरमे अथ पानीदारों का गांव

बेरमे अथ पानीदारों का गांव जल संकट से जूझता है। ग्रामीणों ने बताया कि जल संकट से जूझना पड़ रहा है।



## टीटेय महडा और अठार के पेड़ों में आए 2 गुना फूल

टीटेय महडा और अठार के पेड़ों में आए 2 गुना फूल। ग्रामीणों ने बताया कि फूलों की संख्या बढ़ गई है।



# GIM awareness promotion- local media



## पेरणा आदिवासी लड़कियों ने स्वरोजगार का लिया संकल्प अगर बती बनी जीविका, नहीं कटेगा जंगल

**उपेक्षा, हल्की गैरतत्व्य**  
सरकार की कब कीज  
पोबना जीविकोपार्जन का  
सोचन बन जाए यह जहाँ  
कहा जा सकता है। ऐसी ही  
काम आदिवासी लड़कियों  
क्षेत्र पर तमिळनाडु के पञ्चम  
पंचायत जट्टी में चल रहा  
है, जहाँ पर रैकट्री  
आदिवासी लड़कियों द्वारा  
अन रकत बनावे का काम  
चिया जा रहा है। पत्र  
विभाग के अंतर्गत बांस  
मिश्रण पोबना के माध्यम  
दे अनर बती बनावे का  
काम जट्टी में चल रहा है  
और पहाड़ से रैकट्री परितार  
लाभान्वित हो रहे हैं।



**जीविकोपार्जन का साधन**  
घोषा का मीठा लड़कियों का। बचपन से ही  
ताम्रमिश्रण उत्पादक बन गईं। एक जमाने में तमिळनाडु के  
रहने वाली वे ही न सिर्फ घासों को काटती हैं।  
जहाँ बाँधों बनीं वे कठ से ही घास काटती हैं।  
जिनसे तमिळनाडु के अलग-अलग जिलों में  
काम चलाया जाता है। इन जमाने में तमिळनाडु के  
और तमिळनाडु-या तमिळनाडु के अलग-अलग  
जिलों में काम चल रहा है।  
अगर कोई बच्चे के अभाव में  
समस्या निर्यात करने हैं कि  
अच्छी का जहाँ है। कच्चे  
का काम से अलग है और इसका  
के अभाव में ही यह काम चल रहा है।



**बस मिशन दे रहा है बढ़ावा**  
2 जिलों में आदिवासी लड़कियों को  
अन रकत बनावे का काम चल रहा है।  
अगर कोई बच्चे के अभाव में  
समस्या निर्यात करने हैं कि  
अच्छी का जहाँ है। कच्चे  
का काम से अलग है और इसका  
के अभाव में ही यह काम चल रहा है।

**इन्कम  
कहना है  
किन्करी  
अनरकत  
कुन जमाने में  
कोएक और  
जमाने में  
कटती नथी  
अच्छी  
नहीं जमाने की**



### महुआ की उपज दो गुना करने का दावा सीएफ ने जंगल में लगाई क्लास

एएसएफआरआई द्वारा किए गए शोध के बाद पहाड़ी चार हो रहा नयाचार

गरीबों का संस्था

खुशी से बानी  
बेवासीर  
की उपज दो गुना करने का दावा  
सीएफ ने जंगल में लगाई क्लास

कैप्सूल

### हैं दिव्यांग गणित की परीक्षा से आयश दो परीक्षाओं

आदिवासियों की बस्ती में ग्रीन इंडिया मिशन निरीक्षण करने आया विशेषज्ञों का दल

आदिवासियों की बस्ती में ग्रीन इंडिया मिशन निरीक्षण करने आया विशेषज्ञों का दल

आदिवासियों की बस्ती में ग्रीन इंडिया मिशन निरीक्षण करने आया विशेषज्ञों का दल

### गया पुनर्जीवन यात्रा | राला, नरहठी और करही में लगी चौपालें

15 से शुरू पदयात्रा का छोटी करही के पास बरूआ-टमस मिलन स्थल पर समापन आज

करही नाह बहता वा नाते में पानी

बराहनाला के उद्गम पर तमिळनाडु के अंतर्गत बांस मिश्रण पोबना के माध्यम दे अनर बती बनावे का काम चल रहा है।



जहाँ है हरीयाली  
वहाँ है खुशहाली

## ग्रीन इंडिया मिशन म.प्र.

सतना वन मंडल

परिक्षेत्र : उचेहरा, ग्राम: बेरमे  
कुल लागत रु. 4,50,000



क्षेत्र चयन एवं तैयारी



कार्यकारी स्थल



निर्माणाधीन बाबड़ी



निर्मित

जल संरक्षण कार्य



जहाँ है हरीयाली  
वहाँ है खुशहाली

## ग्रीन इंडिया मिशन म.प्र.

उत्तर बैतूल वन मंडल

परिक्षेत्र : भौरा, ग्राम: कुप्पा, टेटर  
कुल लागत रु. 1,51,000



प्रशिक्षण कार्य



प्रशिक्षण प्राप्त समूह सदस्य



प्रशिक्षण कार्य



विक्रय

सिलाई-कढ़ाई प्रशिक्षण



जहाँ है हरियाली  
वहाँ है खुशहाली

## ग्रीन इंडिया मिशन म.प्र.

### होशंगाबाद वन मंडल

परिक्षेत्र : बनापुरा, ग्राम: पीपलगोटा,  
रांझी, भाटना  
कुल लागत रु. 6,76,400



प्रशिक्षण कार्य



फील्ड ट्रेनिंग



उत्पादन



संग्रहण

## मधुमक्खी पालन कार्य



जहाँ है हरियाली  
वहाँ है खुशहाली

## ग्रीन इंडिया मिशन म.प्र.

### उत्तर बैतूल वन मंडल

परिक्षेत्र : भौरा, ग्राम: भौरा ढाना  
स्व सहायता समूह - अरन्या  
कुल लागत रु. 2,74,843



प्रशिक्षण कार्य



फील्ड ट्रेनिंग



उत्पादन



विक्रय

## सेनेटरी नेपकीन उत्पादन





जहाँ है हरीयाली  
वहाँ है खुशहाली

## ग्रीन इंडिया मिशन म.प्र.

विभिन्न वन मंडलो द्वारा किये गये  
आजीविका मूलक गतिविधियाँ



# International Van Mela 2019- GIM promotion stall for IEC



# Capacity Building- Training on Carbon Measurement Techniques

## FSI, Dehradun

30<sup>th</sup> January to 1<sup>st</sup> February 2019



| Sr. No. | Designation  | Number of participants |
|---------|--------------|------------------------|
| 1.      | Addl. PCCF   | 3                      |
| 2.      | CCF          | 3                      |
| 3.      | DFO's        | 2                      |
| 4.      | SDO's        | 7                      |
| 5.      | RO's         | 14                     |
|         | <b>Total</b> | <b>29</b>              |

## Itarasi, Hoshangabad (MP)

17<sup>th</sup> June to 18<sup>th</sup> June 2019



| Sr. No. | Designation  | Number of participants |
|---------|--------------|------------------------|
| 1.      | Addl. PCCF   | 1                      |
| 2.      | CCF          | 1                      |
| 3.      | DFO's        | 6                      |
| 4.      | SDO's        | 17                     |
| 5.      | RO's         | 19                     |
|         | <b>Total</b> | <b>44</b>              |

# GIS Training: I.T. Wing



## GIS training Manual GIS training – South Sagar



## GIS training – South Seoni





# Knowledge Partnership- IIFM, Bhopal



1. Frame-work for Estimation for Hydrological Services of Forest Landscape
2. Proposed study period 18 (eighteen) months
3. total budget Rs 20.00 lakh
4. **Signed on 8th March 2019 between IIFM and GIM, MP**
5. **Study area selected;**
  - ✓ Satna                      S. Balaghat
  - ✓ Sehore
  - ✓ Dhar

## Objectives of the study:

- i. identify attributes and parameters that affect forest watershed hydrology - measurements/ documentation
- ii. develop MRV to ensure continuous supply of quality water from forest catchment/ watershed
- iii. develop framework for payment for hydrological services of forest landscape

# Knowledge Partnership with PPSU, Bhopal

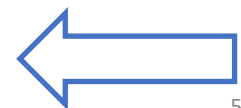


## Proposed activities

1. L2 level landscape Information for 30 landscapes Compilation
2. Socio Economic Survey & Training of the project areas in three forest divisions of ESIP
3. Stakeholders profiling- framework of collaboration- shared visioning exercise
4. Developing IEC framework
5. Developing M&E framework

Total proposal Rs. 66.00 Lakh

- ❖ Socio Economic profiling completed
- ❖ PPSU dissolved by State Planning & Statistical Department
- ❖ Activities 2 to 5 as above not completed
- ❖ Rs.19.80 Lakh (30%) was released. Rs. 8.80 Lakh against unfulfilled activities refunded.
- ❖ SP&SD requested in Jan. 2020 to complete all activities



# Implementation of Tally. ERP9 under Green India Mission

- Establish TALLY software for GIM, NAP & ESIP accounting system.
- Service providing agency- Tally Solutions Pvt. Ltd., authorized OMS Consultants, Bhopal.
- OMS Consultants conducted -
  - ✓ Training of 18 Forest Division account staff(s). Total 85 staff trained
  - ✓ Installation of TALLY ERP9 software in FDs where demand raised
  - ✓ Synchronization of TALLY between HQs & Forest Divisions
- Online synchronization of TALLY between HQs & Forest Div.'s in progress
- Recap workshop for trained staff in February 2020.

| SNO | TRAINING LOCATION                                     | FROM       | TO         | TOTAL PARTICIPANTS |
|-----|---|------------|------------|--------------------|
| 1   | HOSHANGABAD (H'bad, Betul-North & West)               | 03/09/2019 | 06/09/2019 | 14                 |
| 2   | BHOPAL (Sehore, Raisen, O'gunj, R&E Bhopal, GIM H.O.) | 11/09/2019 | 14/09/2019 | 12                 |
| 3   | BALAGHAT (S. Balaghat, S.Seoni)                       | 23/09/2019 | 26/09/2019 | 18                 |
| 4   | UMARIYA (Umariya, S.Sagar)                            | 15/10/2019 | 18/10/2019 | 08                 |
| 5   | DHAR (Dhar, Jhabua, Barwani, Sendhwa)                 | 21/10/2019 | 24/10/2019 | 10                 |
| 6   | PANNA (S.Panna, Satna)                                | 04/11/2019 | 07/11/2019 | 11                 |
| 7   | SHIVPURI (Shivpuri, Sheopur)                          | 16/12/2019 | 19/12/2019 | 12                 |
|     |   |            | TOTAL      | 85                 |



## IIFM, Bhopal Proposal on Ecosystem Services Valuation and Accounting of Madhya Pradesh Forest

- Proposed Study: Ecosystem Services Valuation and Accounting of Madhya Pradesh Forests
- Executing Agency: Centre for Ecological Services Management (CESM), IIFM, Bhopal
- Project Objectives:
  - Overall objective: To estimate values of Ecosystem Services from M.P. Forests & Develop Forest Resource Accounts
  - Specific Objectives:
    1. To enlist forest ecosystem services, estimate their physical values.
    2. To map ecosystem services and create models (carbob, water yield & sediment retention) using InVEST.
    3. To estimate monetary and non-monetary values of ecosystem services & their contribution to state's GDP.
    4. To develop Forest Resource Accounts (FRA) for the state of M.P. based on un statistical division SEEA-EEA 2012 framework
    5. To prepare a case study on ecosystem services improvement project.
    6. To conduct capacity building & training programme for M.P. Forrest Department field officers & staff.

**Time period: 12 months**

**Total Project Cost Proposed : Rs. 84,43,540=00**



## Under GIM, Shivpuri Forest Division research proposal “Status of forest biodiversity and livelihood opportunity”

ग्रीन इंडिया मिशन के अन्तर्गत शिवपुरी वनमण्डल हेतु “Status of forest biodiversity and livelihood opportunity” से संबंधित विषय पर रिसर्च प्रस्ताव का अनुमोदन।

i- वनों पर निर्भर एवं वनक्षेत्र से लगे हुये ग्रामीणों का वनक्षेत्र पर, वनोत्पादों पर निर्भरता

ii- जलग्रहण क्षेत्र में ग्रामीणों की सामाजिक आर्थिक स्थिति एवं वनों पर जीवकोपार्जन हेतु निर्भरता ।

iii- सामाजिक आर्थिक स्थिति के परिप्रेक्ष्य में वैकल्पिक जीवकोपार्जन की संभावनाएं एवं सुदृढिकरण हेतु सुझाव।

iv- वनों की वर्तमान स्थिति एवं जैविक दबाव का आंकलन ।

V- वनों में वनस्पतिक जैव विविधता का आंकलन ।

कुल प्रस्तावित राशि रुपये 1.10 लाख



Under GIM, M.P. State MFPP to prepare proposal on NTFP & Livelihood based Framework for forest dependent communities of GIM landscape in the state

The intended proposal shall cover the following objectives:

- To develop community level baseline for making realistic assessment of the dependencies on and livelihoods from NTFPs
- To develop a framework for NTFP based livelihood for the forest dependent communities which will guide the users through the decisions making process in a step-by-step way ,delivering advice at appropriate points.
- To develop local management plans to include value addition, sustainable use and equitable sharing.
- To suggest appropriate site-specific measures for enhancement of sustained NTFP based livelihood.



M.P. State Biodiversity Board Proposal on upscaling biodiversity monitoring and capacity building activities across 18 divisions covered under GIM

The proposal objectives for upscaling biodiversity monitoring and capacity building activities across 18 divisions covered under GIM are-

- Component Activity 2.0 : Quality of Forest cover and ecosystem services of forest/non forests is improved in moderately dense forest and open forest.
- Component Activity 1.3 : Training and protocol development for biodiversity measurements in select location for preparing biodiversity management plans, especially in corridors.
- Component Activity 1.5 : Support for strengthening Biodiversity Management Committees (BMCs) cum Joint Forest Management Committees (JFMCs) on Biodiversity Management as per the NBA
- Period (Year 2019-20, 2020-21 to year 2021-22)
  - For year 2019-20 Rs. 34.50 Lakh
  - For year 2020-21 Rs. 110.40 Lakh
  - For year 2021-22 Rs. 110.40 Lakh
  - Total outlay of the proposal Rs. 255.30 Lakh

The above proposal is in line with the Madhya Pradesh Vision to Delivery Road Map 2025, point 8.9.3



# Components of ESIP

| Project Components  | Project Cost<br>US\$ M |
|---|------------------------|
| Component 1: Strengthen capacity of government institutions in forestry and land management programs in Madhya Pradesh and Chhattisgarh | 4.0                    |
| Component 2: Investments for improving forest quality in selected landscapes  | 14.5                   |
| Component 3: Scaling-up sustainable land and ecosystem management in selected landscapes  | 3.74                   |
| Component 4: Project Management   | 2.4                    |
| <b>Total Baseline Costs</b>   | <b>24.64</b>           |
| <b>Total Financing Required</b>   | <b>24.64</b>           |





## Additionality of ESIP over GIM

|               | GIM Activities  | ESIP GEF Additionality   |
|---------------|---|--|
| Planning      | <ul style="list-style-type: none"> <li>• Selection of landscapes</li> <li>• Development of plantation packages</li> </ul> | <ul style="list-style-type: none"> <li>• Additional filter of connectivity and livelihood dependance of area selection within GIM landscapes</li> <li>• Community involvement in planning and works</li> <li>• Use of Geographic Information System (GIS) technology for plantation plans</li> <li>• Introduction of Ecosystem services concept/measurement</li> </ul> |
| Funding       | <ul style="list-style-type: none"> <li>• Financial resources for plantation works in GIM landscapes</li> </ul>            | <ul style="list-style-type: none"> <li>• Additional grant funding to link plantation with livelihoods, ecosystem services and forest quality</li> </ul>  |
| Interventions | <ul style="list-style-type: none"> <li>• Plantation support</li> </ul>  | <ul style="list-style-type: none"> <li>• Capacity building of forest staff</li> <li>• Demonstrative investments showcasing full cycle (from planning to plantation and monitoring)</li> <li>• New approaches for Non-Timber Forest (NTFP) value addition and marketing</li> </ul>  |
| Outcomes      | <ul style="list-style-type: none"> <li>• Increased forest cover</li> <li>• Improved forest quality</li> </ul>             | <ul style="list-style-type: none"> <li>• Enhanced carbon sequestration</li> <li>• Carbon monitoring system installed</li> <li>• Livelihood co-benefits</li> <li>• National system for monitoring land degradation and desertification</li> </ul>   |



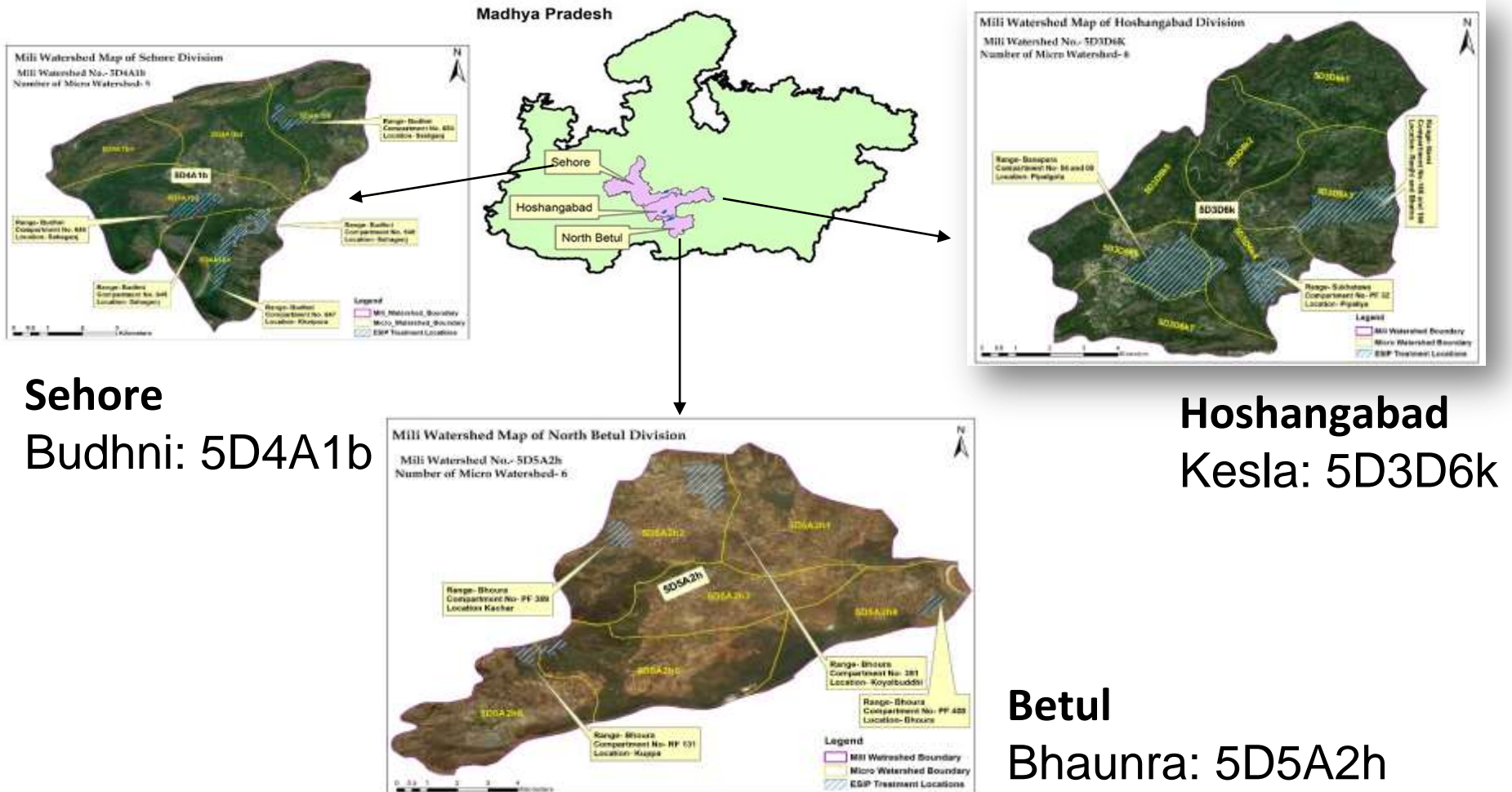
## Project Development Objective (PDO) & PDO Level Results Indicators

- The project development objective (PDO)
  - to improve forest quality,
  - land management and
  - non- timber forest produce (NTFP) benefits for forest dependent communities
- PDO to be measured through key results framework (RF) indicators,
  - People in targeted forest and adjacent communities with increased monetary or non- monetary benefits from forests (disaggregated by: female; ethnic minority/indigenous people)
  - Average cumulative carbon sequestered per hectare in areas supported by the project
  - Direct project beneficiaries, of which female



# Ecosystem Services Improvement Project

## LOCATION MAP OF SELECTED LANDSCAPE UNDER ESIP





## demographic details of project areas

| Division         | villages | male  | female | total | HH   | Sex ratio | sc   | st    | sc %  | ST %  | literacy % |
|------------------|----------|-------|--------|-------|------|-----------|------|-------|-------|-------|------------|
| Hoshangabad      | 20       | 5616  | 5233   | 10849 | 2135 | 932       | 586  | 7630  | 5.40  | 70.33 | 47.92      |
| Sehore           | 8        | 2381  | 2059   | 4440  | 921  | 865       | 921  | 1540  | 20.74 | 34.68 | 55.58      |
| Betul            | 8        | 2819  | 2710   | 5529  | 1162 | 961       | 424  | 4241  | 7.67  | 76.70 | 50.12      |
| total of project | 36       | 10816 | 10002  | 20818 | 4218 | 925       | 1931 | 13411 | 9.28  | 64.42 | 51.20      |

| S.No.        | L1 Level Landscapes          | L2 Level Landscapes |                 | L3 Level Landscapes | Forest Area (ha) |                 |                 |                  | Non Forest Area (ha) | Total Area (ha)  |
|--------------|------------------------------|---------------------|-----------------|---------------------|------------------|-----------------|-----------------|------------------|----------------------|------------------|
|              |                              | Division            | Milli-watershed |                     | Micro Watershed  | Dense Forest    | Open Forest     | Blank            |                      |                  |
| 1            | Satpura-Narmada              | Hoshangabad         | 5D3D6k          | 7(5D3D6k1-7)        | 5,947.25         | 128.93          | 491.61          | 6,567.80         | 63.85                | 6,631.64         |
| 2            |                              | North Betul         | 5D5A2h          | 6(5D5A2h1-6)        | 3,622.99         | 1,063.96        | 754.28          | 5,441.23         | 4,139.34             | 9,580.58         |
|              | <b>Satpura-Narmada Total</b> |                     |                 |                     | <b>9,570.24</b>  | <b>1,192.89</b> | <b>1,245.89</b> | <b>12,009.03</b> | <b>4,203.19</b>      | <b>16,212.22</b> |
| 3            | Vindhya Plateau              | Sehore              | 5D4A1b          | 5(5D4A1b1-5)        | 1,187.83         | 1,443.48        | 98.19           | 2,729.50         | 1,676.75             | 4,406.25         |
| <b>Total</b> | <b>2</b>                     | <b>3</b>            | <b>3</b>        | <b>18</b>           | <b>10,758.08</b> | <b>2,636.37</b> | <b>1,344.08</b> | <b>14,738.53</b> | <b>5,879.94</b>      | <b>20,618.47</b> |

# Brief Progress continued . . . .



## Workshops organized-

- National level reach out workshop- 1
- Division level workshops- 4
- Range level workshops- 7
- village level workshops- 24
  - To sensitize the stakeholders about the ESIP Project.
  - Total no. of JFMCs members- 5569,
  - Government functionaries- 553 participated
- exposure visits organized- 17
- JFMCs members participated- 910  
to understand best practices

# Brief Progress continued...



- Livelihood initiatives:
  - beneficiaries identified- 1192
  - facilitated employment opportunities- 603
  - beneficiaries trained on-
    - improved mahua collection, bee keeping, honey collection,
    - mushroom cultivation, vermi-compost units, sanitary napkin units,
    - computer skilling, tailoring support.
- Nursery upgradation: Bansapur, Sehore
  - C.C beds-200
  - poly house-720 sq.m,
  - green house 722 sq.m,
  - vermi-compost units-10m\*6m 4 tanks,
  - root trainers- 1.00 lakh units
  - solar pump-7.5 KVA,
  - Seed treatment platform- 300sq.m,
  - Sprinkler set-for 200 beds, 4 per bed
- GIS training: by I.T. wing
  - 72 Advanced GNSS handsets procured & issued to divisions.
  - Training calendar finalized for all 18 divisions.
  - I.T. Wing completed training in July/Aug. 2019.

# Issues in procurement



1. APO 2018-19 had provision for engaging Bio Diversity Board, SFRI, State planning commission for carrying out various capacity building exercises.
2. During the procurement process, the bank refused engagement of state agencies due to procurement guidelines of the bank.
3. World Bank advised that proposals be invited through REoIs for
  - i. Development of sustainable use framework for NTFP and train local frontline staff, JFMCs etc in applying NTFP framework
  - ii. community level baseline assessment of dependency of livelihood on NTFPs
  - iii. Training and protocol dev. for biodiversity measurements in select location for preparing biodiversity management plans, especially in corridors
  - iv. Support for strengthening BMCs/ JFMCs on Biodiversity Management as per NBA

# Issues in procurement



4. SPIU prepared fresh ToRs for hiring consulting agencies in Biodiversity Assessment, NTFP based livelihoods & IEC Strategy.
5. World Bank clearance for the above consultancies in May 2019.
  - i. NTFP & Biodiversity consultancies estimated cost of US Dollar 75,000.00 each
  - ii. IEC consultancy estimated cost of US Dollar 35,000.00 .
6. The consultancies cleared under ‘CQS’- Consultant Qualification Selection Method of selection by World Bank.
7. SPIU awaiting approval from GoMP for the RFPs for the above 03 consultancies to go ahead with selection of an agency through an advertisement in the open market.



# Advance Works 2018-19



North Betul



North Betul



Latitude: 22°47'47"  
Longitude: 77°45'2"  
Elevation: 360.96m  
Accuracy: 5.3m  
Time: 02-12-2019 15:28  
Note: gim 658 joshipur simankon kacya

Sehore



Sehore



Latitude: 22.413332  
Longitude: 77.66088  
Elevation: 448.97m  
Accuracy: 3.2m  
Time: 01-31-2019 17:08  
Note: Baidanura R14

Hoshangabad

# Pond : Koyalbuddi, North Betul



कार्यालय कलेक्टर भू-अभिलेख बैतूल  
दैनिक वर्षा की जानकारी मि. मीटर में विमानानुसार डे दिनांक 17/09/2018

| जिले में स्थिति वर्तमान क्षेत्र का नाम | बारू वर्ष (2018-19) |         | गत वर्ष (2017-18) में |         |
|--|---------------------|---------|-----------------------|---------|
|  | दैनिक               | प्रणाली | दैनिक                 | प्रणाली |
| 1                                      | 2                   | 3       | 4                     | 5       |
| बैतूल                                  | 0                   | 402.6   | 0                     | 614.6   |
| घोडाखोगरी                              | 0                   | 683.8   | 0                     | 661.2   |
| चिचोली                                 | 0                   | 688.2   | 16.3                  | 656.6   |
| शाहपुर                                 | 0                   | 434.2   | 0                     | 683.6   |
| मुल्ताई                                | 0                   | 469.6   | 0                     | 475.3   |
| प्रभात पट्टन                           | 0                   | 328.4   | 0                     | 550.8   |
| आमला                                   | 0                   | 454.0   | 0                     | 559.0   |
| मंसदेही                                | 0                   | 631.2   | 0                     | 733.5   |
| आठनेर                                  | 0                   | 495.8   | 0                     | 535.8   |
| भीमपुर                                 | 0                   | 876.8   | 5.0                   | 694.6   |
| जिले की औसत वर्षा                      | 0                   | 515.5   | 2.1                   | 636.4   |

टीप - जिले की औसत सामान्य वर्षा 1083.9 मिमी.

भू-अभिलेख, बैतूल

कार्यालय कलेक्टर भू-अभिलेख बैतूल  
दैनिक वर्षा की जानकारी मि. मीटर में विमानानुसार डे दिनांक 22/07/2018

| जिले में स्थिति वर्तमान क्षेत्र का नाम | बारू वर्ष (2018-20) |         | गत वर्ष (2018-19) में |         |
|--|---------------------|---------|-----------------------|---------|
|  | दैनिक               | प्रणाली | दैनिक                 | प्रणाली |
| 1                                      | 2                   | 3       | 4                     | 5       |
| बैतूल                                  | 0.0                 | 139.0   | 1.6                   | 236.6   |
| घोडाखोगरी                              | 0.0                 | 186.3   | 3.0                   | 481.5   |
| चिचोली                                 | 0.0                 | 295.9   | 1.2                   | 320.3   |
| शाहपुर                                 | 0.0                 | 203.7   | 0.0                   | 271.2   |
| मुल्ताई                                | 0.0                 | 169.0   | 1.0                   | 340.2   |
| प्रभात पट्टन                           | 0.0                 | 106.5   | 7.2                   | 249.3   |
| आमला                                   | 0.0                 | 118.0   | 0.0                   | 234.0   |
| मंसदेही                                | 0.0                 | 267.9   | 0.0                   | 333.2   |
| आठनेर                                  | 2.0                 | 155.4   | 1.5                   | 322.3   |
| भीमपुर                                 | 0.0                 | 152.0   | 0.0                   | 261.5   |
| जिले की औसत वर्षा                      | 0.2                 | 180.9   | 1.6                   | 311.9   |

टीप - जिले की औसत सामान्य वर्षा 1083.9 मिमी.  
गत वर्ष की औसत वर्षा 816.0 मिमी.

भू-अभिलेख, बैतूल



[डेस बोर्ड](#)[विजुअलाइजेशन](#)[रिपोर्टें](#)[डाउनलोड](#)[सहायता पुस्तिका](#)[पी.डी.ए. आवंटन](#)[वृक्षारोपण विलोपित करें](#)[पुनर्उत्पादन सर्वेक्षण जी.आई.एम.](#)

## वृक्षारोपण की रिपोर्ट

[Back](#)

# Plantation details FY 2019-20

## वृक्षारोपण सूची

| क्रमांक | पंजीकरण क्रमांक | वृक्ष       | वनमंडल      | परिक्षेत्र | बीट / पंचायत | श्रेणी का चयन करें | क्षेत्र प्रकार | वर्ष | श्रेणी | श्रेणी | क्षेत्र (हेक्टेयर) | पौधों की संख्या | स्वीकृत स्थिति | प्रजाति   | पंजीकरण तिथि | विवरण             |
|---------|-----------------|-------------|-------------|------------|--------------|--------------------|----------------|------|--------|--------|--------------------|-----------------|----------------|---|--------------|-------------------|
| 1       | 105004          | Betul       | North Betul | Bhaura     | Koyalbuddi   | 391 PF             | Forest         | 2019 | Misc   | ESIP   | 75                 | 75000           | Draft          | Mixed , Teak  | 17 Jan 2019  | <a href="#">i</a> |
| 2       | 105307          | Betul       | North Betul | Bhaura     | Kuppa        | 131 RF             | Forest         | 2019 | Bamboo | ESIP   | 50                 | 20000           | Draft          | Bamboo  | 31 May 2019  | <a href="#">i</a> |
| 3       | 105308          | Betul       | North Betul | Bhaura     | Kachar       | 389 PF             | Forest         | 2019 | Misc   | ESIP   | 25                 | 25000           | Draft          | Mixed   | 31 May 2019  | <a href="#">i</a> |
| 4       | 105309          | Betul       | North Betul | Bhaura     | Bhoura       | 400 PF             | Forest         | 2019 | Misc   | ESIP   | 29                 | 5800            | Draft          | Mixed   | 31 May 2019  | <a href="#">i</a> |
| 5       | 106350          | Hoshangabad | Hoshangabad | Banapura   | Pipalgota    | 4 RF               | Forest         | 2019 | Misc   | ESIP   | 300                | 90000           | Draft          | Aaonia , Bahera , Bamboo , Mahua , Others , Teak  | 19 Jul 2019  | <a href="#">i</a> |
| 6       | 106390          | Hoshangabad | Hoshangabad | Itarsi     | South Bhatna | 165 RF             | Forest         | 2019 | Misc   | ESIP   | 200                | 15293           | Draft          | Aaonia , Bamboo , Karanj/Kanji , Khamher/ Seevan , Neem , Others , Shisham/Sissu , Teak | 20 Jul 2019  | <a href="#">i</a> |
| 7       | 106395          | Hoshangabad | Hoshangabad | Sukhatawa  | Pipariya     | 32 PF              | Forest         | 2019 | Misc   | ESIP   | 100                | 25000           | Draft          | Aaonia , Bahera , Bamboo , Jamun , Karanj/Kanji , Mahua , Others , Shisham/Sissu , Teak | 20 Jul 2019  | <a href="#">i</a> |

कुल 779 256093

योग: 779 256093

कुल

योग:

[Plantation Monitoring System](#)[एक्सेस में निर्यात करें](#)[पी.डी.ए. में निर्यात करें](#)

# Approved APO for FY 2019-20



## Site preparation (advance works) details FY 2019-20

| Divisions   | Total area of site preparation (in ha.) | Total area for innovative plantation pilots (in ha.) | Total (in Ha.) |
|-------------|---|--|----------------|
| Sehore      | 50                                      | 5  | 55             |
| North Betul | 350                                     | 5  | 355            |
| Hoshangabad | 600                                     | 5  | 605            |
| Total       | 1000                                    | 15   | 1015           |

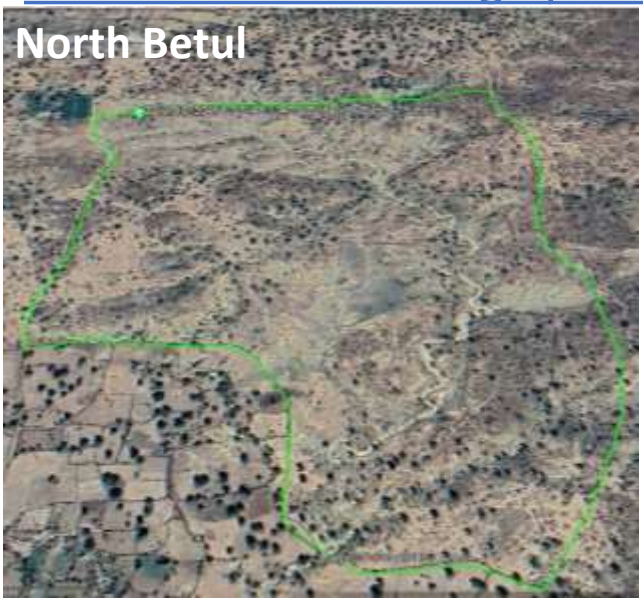
## Plantation details FY 2019-20

| Divisions   | Total area of plantation (in ha.) | Species selected for plantation  | Number of saplings planted (in nos.) |
|-------------|-----------------------------------|--|--------------------------------------|
| Sehore      | 300                               | Teak, Bamboo, khamer, Mahua, Awala,  | 2,25,000                             |
| North Betul | 179                               | Teak, Bamboo, Khamer, Karanj, Neem, Sirius, Pentafarm, Awala, Baheda, Sisu, Chirol | 1,38,960                             |
| Hoshangabad | 600                               | Teak, Bamboo, Karanj, Mahua, Awala, Baheda, Jamun, Chirol, Sisam                   | 1,91,050                             |
| Total       | 1079                              |  | 5,55,010                             |

# Registered KML of Project Sites in Plantation Monitoring System



North Betul



Hoshangabad



North Betul



North Betul



Hoshangabad



Hoshangabad



North Betul



# **ARIAL VIEW OF INFRASTRUCTURE BANSAPUR NURSERY**

**Green House**

**Poly-House**

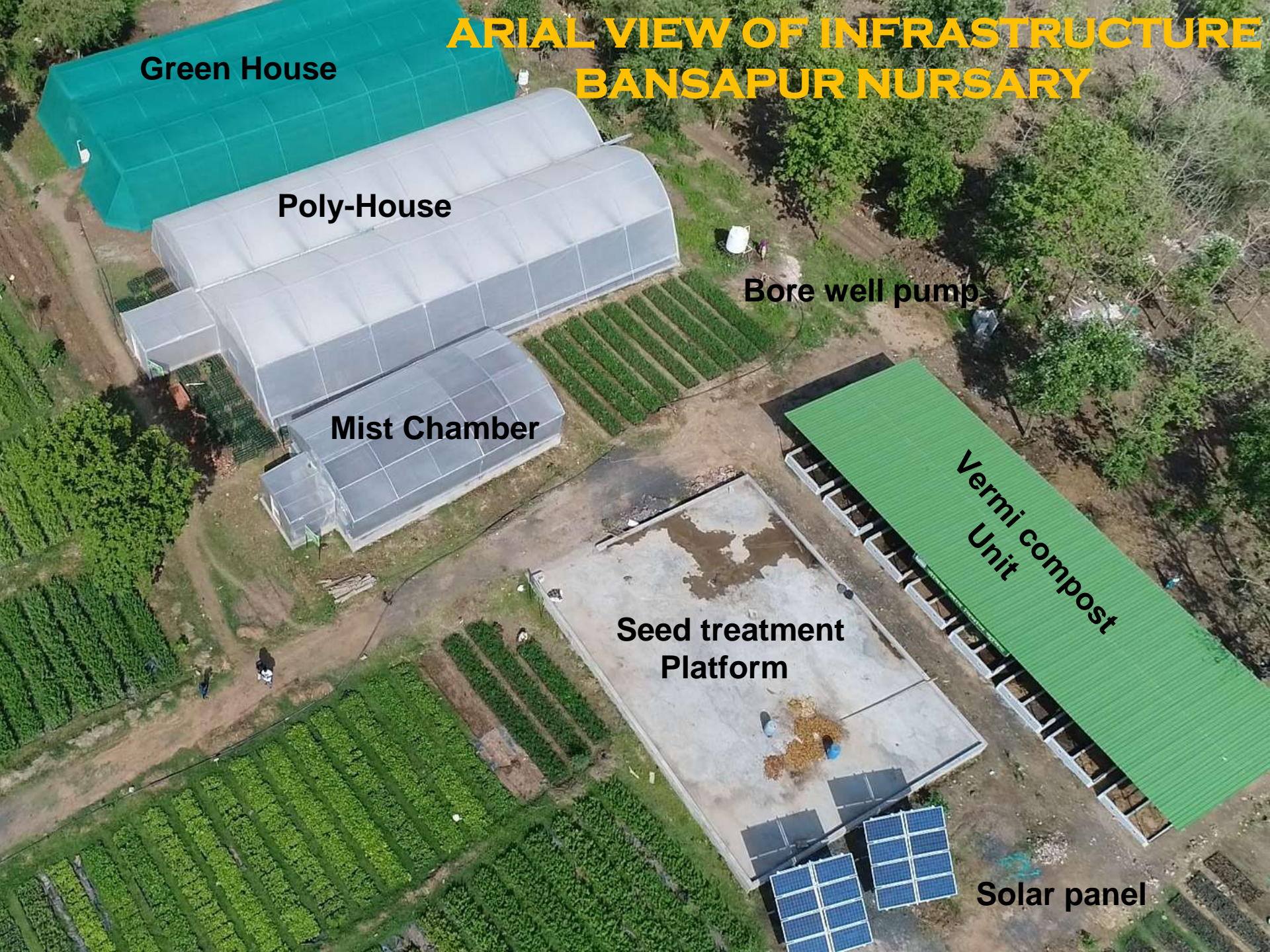
**Mist Chamber**

**Bore well pump**

**Seed treatment  
Platform**

**Vermi compost  
Unit**

**Solar panel**



# Plantation 2019-20



## Sehore plantation



## North Betul plantation



## Hoshangabad Plantation



# Approved APO for FY 2019-20



## Project Components

1. Strengthening Capacity of Government Institutions in Forestry and Land Management Programs Rs. 443.10 Lakh
2. Investments for Improving Forest Quality in Selected Landscapes- Rs. 1469.14 Lakh
3. Project Management and Coordination Rs. 188.90 Lakh
4. Total Proposed APO Rs. 2101.14 Lakh

**The APO approved by MoEF&CC, GoI National Project Steering Committee 2nd Meeting held on 23rd July 2019 vide O.M. dated 2nd Aug. 2019.**





# Status of claims submitted to World Bank (till Sept. 2019)

| Period             | Claim Date  | IUFR No.     | RF/WF No. | Expenses Reported | Claim Request  | Claims Reimbursed | Balance Amount |
|--------------------|-------------|--------------|-----------|-------------------|----------------|-------------------|----------------|
| April'17<br>Mar'18 | to 8/29/18  | 201800138/1  | TF0A3990  | 44.16             | 44.16          | 44.12             | 0.04           |
| Apr' 18<br>Sep' 18 | to 11/12/18 | 2018002708/1 |           | 11.89             | 11.89          | 11.75             | 0.14           |
| Oct'18<br>Dec'18   | to 2/11/19  | 2018003847   |           | 16.27             | 16.27          | 16.27             | 0.00           |
| Jan'19<br>Mar'19   | to 5/24/19  | 2019000600/1 |           | 614.76            | 614.76         | 609.68            | 5.08           |
| Apr'19<br>Jun'19   | to 7/15/19  | 2019001386/1 |           | 288.46            | 288.46         | 288.46            | 0.00           |
| Jul'19<br>Sept'19  | to 10/9/19  | 2019002324/1 |           | 257.27            | 257.27         | 0.00              | NA             |
| <b>Total</b>       |             |              |           |                   | <b>1232.81</b> | <b>1232.81</b>    | <b>970.28</b>  |